

Service unit, 3-piece

Size 4

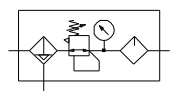
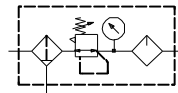
FU 625 FU 637

G 3/4

FU 626 FU 638

G 1

Filter rating 5 µm



Description

- **Service unit** as a pre-assembled combination of individual service units in the "Futura" series
- "KP300" or "WK 103" joiner set for seamless integration with other devices

Characteristics

Type	FU 625	FU 637	FU 626	FU 638
Port ISO 228	G 3/4 (semi)	G 3/4 (auto)	G 1 (semi)	G 1 (auto)
Type of construction	- Centrifugal filter, sintered filter element 5 µm - Diaphragm pressure regulator with self-relieving design - Proportional oil-mist lubricator, refilling under pressure			
Medium	Compressed air, neutral gases			
Mounting position	Vertical, bowl at bottom			
Control ranges	0.1 to 1 bar / 0.1 to 2 bar / 0.2 to 4 bar / 0.5 to 8 bar / 0.5 to 10 bar / 0.5 to 16 bar			
Internal air consumption	max. 1.5 l/min (depending on secondary pressure)			
Temperature Medium / ambient	Max. 50°C			
Input pressure Pin - With automatic / semi-automatic drain - With manual drain	Min. 1.5 bar / max. 16 bar Max. 16 bar			
Filter rating	Pore size 5 µm			
Bowl capacity	Filter regulator 87 cm ³ / lubricator 181 cm ³			
Condensate drain	Semi-automatic – pressureless exhaust (semi) / fully automatic (auto)			
Drip rate / qv = 1000l/min	1 to 2 drops / min (recommended value)			
Oil grade	CL 32 acc. to DIN 51517 – ISO VG 32			
Weight	2620 kg (semi) / 2680 kg (auto)			
Mounting type	Bracket, wall mounting			

Materials

Part	Material
Head piece	IXEF1022®
Diaphragm	Brass-NBR-PA6
Valve cone	Brass-NBR
Bowl (filter / lubricator)	Polycarbonate
Bowl guard	Polyamide
Metal bowl (filter / lubricator)	Die-cast zinc
Sight dome	Polycarbonate
O-ring 55 x 2.5	NBR70
Filter element	Cellpor (polyethylene)
Threaded plates	Die-cast zinc Z 410

Ordering information

- The service units are delivered in single packs
- Pressure gauge included

