

**Characteristics**

Type	572.12 D
Type of construction	Diaphragm pressure regulator <b>with self-relieving design</b> (reversible) Centrifugal filter Stainless steel filter element
Pipe thread	G 1/2
Pressure gauge	G 1/4
Control range	1.0 to 15.0 bar
	<b>Special versions on request</b>
	- NPT threads
Input pressure	Max. 30 bar
Mounting position	Vertical
Drain	Manuel drain valve
Mounting type	Bracket and nut, hole Ø50.5 mm
<b>Temperature</b>	
Medium	-20 °C to +130 °C
Ambient	-20 °C to +60 °C
Filter element	
Filter rating	50 µm
Bowl Contents	0,28 l
Weight [g]	2200 / 2350 with pressure gauge

**Materials**

Part	Material
Head piece	1.4404 (AISI 316L)
Spring bonnet	1.4404 (AISI 316L)
Adjusting screw	1.4301
Diaphragm	PTFE on NBR-carrier
Valve cone	1.4404 (AISI 316L) / FKM
O-rings	FKM
Filter element	1.4404 (AISI 316L)

**Main spare parts**

Designation	Part No.
Repair kit	22.57224.4
Press. gauge, 1.4571, G 1/4, Ø 63 mm	4084
0 to 10.0 bar	4085
0 to 16.0 bar	

**Operation**

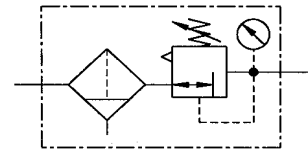
- Stainless steel filter regulator containing no non-ferrous metals for use in the food processing, chemical, mining, plant construction and special machinery industries
- Suitable for use in medical equipment
- All applications where excellent resistance to corrosion is essential

**Not suitable for liquid media**

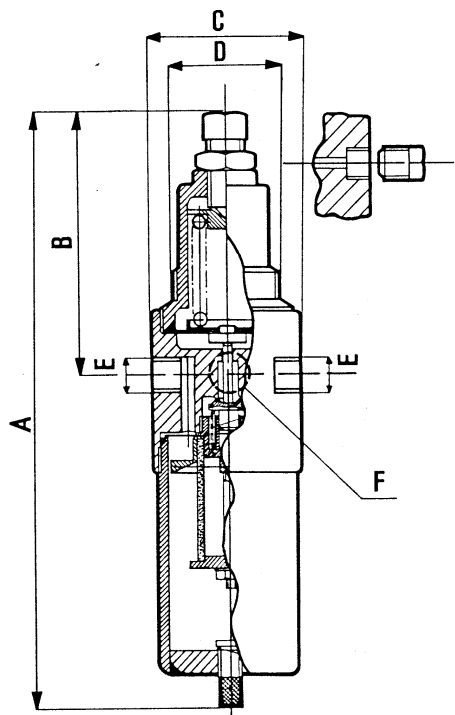
**No liability can be accepted if explosive media or media which could be detrimental to health are used!**

**Filter regulator**

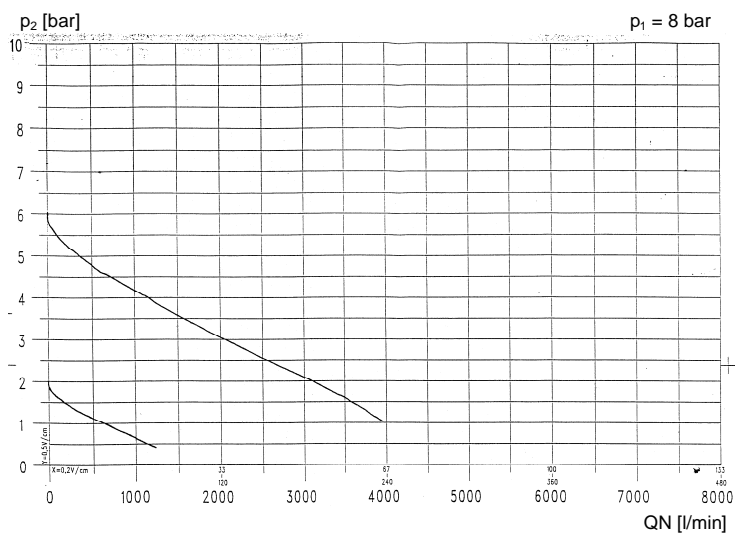
Size 2

**G 1/2**
**1.0 to 15.0 bar**
**572.12 D**

**Ordering information**

Designation	Order No.
Filter regulator (reversible) with self-relieving design and pressure gauge Control range	
1.0 to 15.0 bar	<b>572.12 D</b>
<b>Accessories</b>	
- Mounting bracket with fixing nut	<b>576/3</b>
- Pressure gauge 0 to 10 bar	<b>4084</b>
0 to 16 bar	<b>4085</b>

**Dimensions [mm]**


Type	Press. gauge	A	B	C	D	E	F
	Ø	[mm]					
572.12	63	260	127	80	50	G 1/2	G 1/4

**Flow characteristic**

**Hysteresis**
