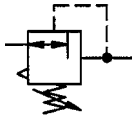


# Constant pressure regulator

**EASY**

Art. No. 147523

Type No. DRK.G114.BG5.0,1-3B



no image available

Exemplary illustration

Reversible diaphragm pressure regulators, independent of inlet pressure, with self-relieving design. The pressure regulators maintain a constant working pressure regardless of variations in the inlet pressure.

## Technical data

Medium temperature	-10 to 60 °C
Ambient temperature	-10 to 60 °C
Sealant	NBR
Spring bonnet	die-cast aluminium
Flow rate measurement	at $P_1 = 8$ bar, $P_2 = 6$ bar and pressure drop $\Delta_p = 1$ bar
Thread	G 1 1/4
Size	5
Max. input pressure	40 bar
Housing	die-cast zinc
Control range	0,1 - 3 bar
Flow rate	16500 l/min
A	125.0 mm
C	53.0 mm
D	203.0 mm
E	119.0 mm

## Commercial data

Customs tariff number	84811099
Country of origin	DE
eCl@ss 5.1.4	37011108
eCl@ss 9.0	37011108
UNSPSC_Code_v190501	41112449
UNSPSC_CodeDesc_v190501	Pressure regulator

## Spareparts

	<b>Art. No.</b>	<b>Type No.</b>
Wear part set, size 5, for control range max. 3, 6, 10 and 16 bar	147542	VTSDRK.BG5.3-16B
Pressure gauge Ø 63 mm, G 1/4 ET, 0 - 6 bar/87 psi	101224	216-KD