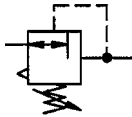


Constant pressure regulator

EASY

Art. No. 147519

Type No. DRK.G1.BG4.0,2-6B



no image available

Exemplary illustration

Reversible diaphragm pressure regulators, independent of inlet pressure, with self-relieving design.
The pressure regulators maintain a constant working pressure regardless of variations in the inlet pressure.

Technical data

| | |
|-----------------------|--|
| Medium temperature | -10 to 60 °C |
| Ambient temperature | -10 to 60 °C |
| Sealant | NBR |
| Spring bonnet | die-cast aluminium |
| Flow rate measurement | at $P_1 = 8$ bar, $P_2 = 6$ bar and pressure drop $\Delta_p = 1$ bar |
| Thread | G 1 |
| Size | 4 |
| Max. input pressure | 40 bar |
| Housing | die-cast zinc |
| Control range | 0,2 - 6 bar |
| Flow rate | 10000 l/min |
| A | 125.0 mm |
| C | 48.0 mm |
| D | 190.0 mm |
| E | 117.0 mm |

Commercial data

| | |
|-------------------------|--------------------|
| Customs tariff number | 84811099 |
| Country of origin | DE |
| eCl@ss 5.1.4 | 37011108 |
| eCl@ss 9.0 | 37011108 |
| UNSPSC_Code_v190501 | 41112445 |
| UNSPSC_CodeDesc_v190501 | Pressure regulator |

Spareparts

| | Art. No. | Type No. |
|---|-----------------|------------------|
| Wear part set, size 4, for control range max. 3, 6, 10 and 16 bar | 147540 | VTSDRK.BG4.3-16B |
| Pressure gauge Ø 63 mm, G 1/4 ET, 0 - 10 bar/145 psi | 101244 | 217-KD |