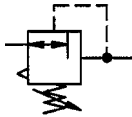


# Constant pressure regulator

EASY

Art. No. 147504

Type No. DRK.G34.BG3.0,2-6B



no image available

Exemplary illustration

Reversible diaphragm pressure regulators, independent of inlet pressure, with self-relieving design. The pressure regulators maintain a constant working pressure regardless of variations in the inlet pressure.

## Technical data

Medium temperature	-10 to 60 °C
Ambient temperature	-10 to 60 °C
Sealant	NBR
Spring bonnet	die-cast zinc
Flow rate measurement	at $P_1 = 8$ bar, $P_2 = 6$ bar and pressure drop $\Delta_p = 1$ bar
Thread	G 3/4
Size	3
Max. input pressure	40 bar
Housing	die-cast zinc
Control range	0,2 - 6 bar
Flow rate	5000 l/min
A	90.0 mm
B	167.0 mm
C	31.0 mm
D	136.0 mm

## Commercial data

Customs tariff number	84811099
Country of origin	DE
eCl@ss 5.1.4	37011108
eCl@ss 9.0	37011108
UNSPSC_Code_v190501	41112430
UNSPSC_CodeDesc_v190501	Pressure regulator

## Spareparts

	<b>Art. No.</b>	<b>Type No.</b>
Wear part set, size 3, for control range max. 3, 6, 10 and 16 bar	147538	VTSDRK.BG3.3-16B
Standard pressure gauge	101677	206-KD