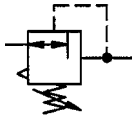


Constant pressure regulator

EASY

Art. No. 147488

Type No. DRK.G38.BG2.0,1-3B



no image available

Exemplary illustration

Reversible diaphragm pressure regulators, independent of inlet pressure, with self-relieving design.
The pressure regulators maintain a constant working pressure regardless of variations in the inlet pressure.

Technical data

| | |
|-----------------------|--|
| Medium temperature | -10 to 60 °C |
| Ambient temperature | -10 to 60 °C |
| Sealant | NBR |
| Flow rate measurement | at $P_1 = 8$ bar, $P_2 = 6$ bar and pressure drop $\Delta_p = 1$ bar |
| Thread | G 3/8 |
| Size | 2 |
| Max. input pressure | 40 bar |
| Housing | die-cast zinc |
| Control range | 0,1 - 3 bar |
| Flow rate | 2200 l/min |
| A | 70.0 mm |
| B | 153.0 mm |
| C | 34.0 mm |
| D | 119.0 mm |

Commercial data

| | |
|-------------------------|--------------------|
| Customs tariff number | 84811099 |
| Country of origin | DE |
| eCl@ss 5.1.4 | 37011108 |
| eCl@ss 9.0 | 37011108 |
| UNSPSC_Code_v190501 | 41112414 |
| UNSPSC_CodeDesc_v190501 | Pressure regulator |

Spareparts

| | Art. No. | Type No. |
|---|-----------------|------------------|
| Wear part set, size 2, for control range max. 3, 6, 10 and 16 bar | 147536 | VTSDRK.BG2.3-16B |
| Standard pressure gauge, rear centric, G 1/4, 0 - 6 bar/87 psi | 101676 | 205-KD |