

Solenoid valve

3/2-way type - normally closed - brass

MAX

Art. No. 145429

Type No. 107.12-01



Exemplary illustration

Directly operated seat valve with spring return and manual operator.
Also suitable for vacuum operation.

Technical data

Housing	brass
Valve seat	brass
Internal parts	stainless steel
Protection IP	IP 67 (when using the cable plug)
Version	directly operated
Function	normally closed (NC)
Thread	G 1/8
DN	1.2
Voltage	24 V DC
Operating pressure	0 - 15 bar
Sealant	FKM
Electrical connection	connector socket, can be rotated 180°, PG7 acc. to 43650
Medium temperature	0 to 130 °C
Ambient temperature	-10 to 60 °C
Electrical part	IEC 335
Standard thread	G = ISO 228/1
Applications	compressed air and neutral, non-toxic gases, water, oil
Differential pressure	see characteristics valve body [1 bar = 100 kPa]
Viscosity	max. 40 cSt (mm ² /s)
Response time	10 to 30 ms
Guide tube	stainless steel
Armature of magnet	stainless steel
Counter-armature	stainless steel

Technical data

Springs	stainless steel
End ring	copper
Insulation class	F / IP 67
Flow rate kv value	0.05 m ³ /h
Flow rate	0.83 l/min
Min. working pressure difference	0 bar
Max. working pressure difference	15 bar
Manual control	yes
Weight	155.0 g
A	61.9 mm
B	33.2 mm

The resistance of the parts in contact with the medium must be checked separately.

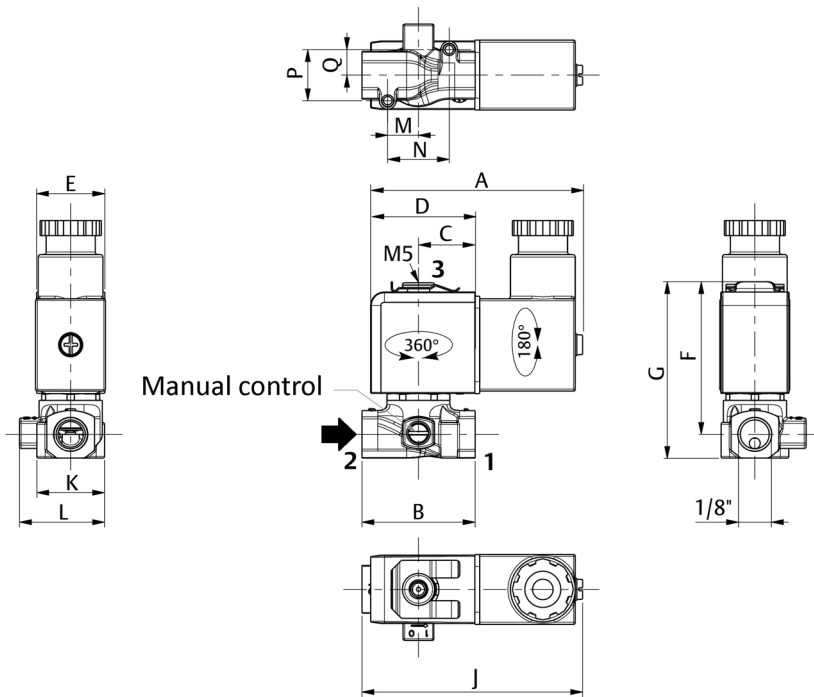
Weight information including magnet and cable socket

Operating pressure difference information for air /oil / water

Commercial data

Customs tariff number	84812090
Country of origin	IT
eCl@ss 5.1.4	27220601
eCl@ss 9.0	27220601
UNSPSC_Code_v190501	40141605
UNSPSC_CodeDesc_v190501	Solenoid valves

Dimensions



Thread	A	B	C	D	E	F	G	H	J	K	L
	mm	mm	mm	mm	mm	mm	mm	mm	mm	mm	mm
G 1/8	61.9	33.2	16.5	30.5	20.0	44.7	51.7	69.7	64.8	19.9	24.95
	M	N	P	Q							
	mm	mm	mm	mm							
	9.0	18.0	15.0	7.5							

Product informations

Description

- Compact design for controlling single-acting drives or filling and emptying processes.
- Guide tube can be quickly dismantled for easy maintenance.
- Manual operator. - Interchangeable magnetic heads (AC / DC).

Installation

- Any mounting position.
- Valve bodies have two holes.
- Threaded connections G acc. to DIN EN ISO 228-1.
- Installation and maintenance instructions enclosed with each valve.