

Closing cap

Stainless steel 1.4408

STAINLESS STEEL

Art. No. 119341

Type No. VKG18ES4408SK



Exemplary illustration

Technical data

| | |
|-----------------------|------------------------|
| Max. working pressure | 20 bar |
| Thread | G 1/8 |
| L1 | 11.8 mm |
| a/f | 13 mm |
| Thread form | parallel female thread |
| Standard thread | DIN EN ISO 228-1 |
| Version | Hexagonal |

From thread size of 1 inch, we recommend using an adjustable open-end wrench.

To ensure a proper sealing of the cylindrical threads (G) and tapered threads (R/Rp) we recommend using a suitable sealant (e.g. hemp, sealing tape or suitable industrial adhesive).

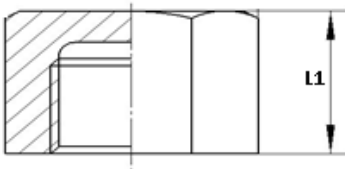
Commercial data

| | |
|-------------------------|--------------------------|
| Customs tariff number | 73072910 |
| Country of origin | CN |
| eCl@ss 5.1.4 | 22360607 |
| eCl@ss 9.0 | 22560207 |
| UNSPSC_Code_v190501 | 40172407 |
| UNSPSC_CodeDesc_v190501 | Stainless steel pipe cap |

Material informations

| | |
|----------------------------|----------------------------|
| REACH SVHC1 substance name | no |
| CAS no. SVHC 1 | no CAS No. |
| RoHS materials notice | RoHS compliant |
| REACH Info | no SVHC substance included |

Dimensions



| Thread | L1 mm | a/f mm |
|--------|----------|-----------|
| G 1/8 | 11.8 | 13 |

From thread size of 1 inch, we recommend using an adjustable open-end wrench.

To ensure a proper sealing of the cylindrical threads (G) and tapered threads (R/Rp) we recommend using a suitable sealant (e.g. hemp, sealing tape or suitable industrial adhesive).