

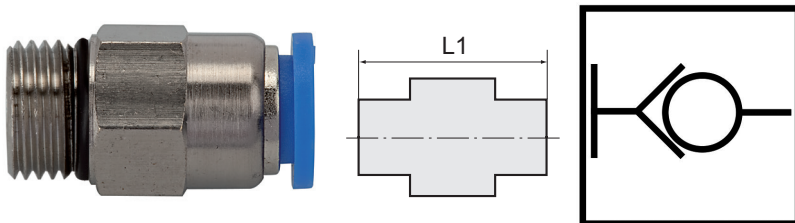
## Stopper valve, straight push-in fitting

»blue series«

**EASY**

Art. No. 110166

Type No. 195.388



Exemplary illustration

The air supply is completely shut off as soon as the hose is disconnected from the union.  
The flow rate is only guaranteed if the hose is securely inserted.

Discontinued product. No longer available. New product 151445 (195.388-2)

### Technical data

Working pressure	0 - 10 bar
Temperature range	0 to 60 °C
Series	Blue series
Material	Plastic and nickel-plated brass
Medium	Compressed air
Sealant	NBR
Sleeve	Plastic blue
Applications	Compressed air systems
Recommended hose	PU or PA (nylon)
Function	Self-locking
Thread form	Parallel male thread
Standard thread	DIN EN ISO 228-1
Version	With o-ring (NBR)
Thread	G 3/8
For tube O.D.	8 mm
L1	29.0 mm
a/f	20 mm

The suitability test for the use with alternative specifications is the user's responsibility.

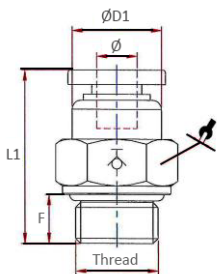
## Commercial data

Customs tariff number	39174000
Country of origin	CN
eCl@ss 5.1.4	27294201
eCl@ss 9.0	27294201
UNSPSC_Code_v190501	27131613
UNSPSC_CodeDesc_v190501	Air coupling

## Material informations

REACH SVHC1 substance name	lead
CAS no. SVHC 1	7439-92-1
RoHS materials notice	RoHS compliant
REACH Info	contains SVHC substance

## Dimensions



Thread	Standard thread	For tube O.D.	F	a/f	L1	D1
		mm	mm	mm	mm	mm
G 3/8	DIN EN ISO 228-1	8	7.5	20	29.0	14.0