

Multi-base plate

for the pilot valves, pneumatic and electro-pneumatic

Art. No. 106638

Type No. 520.08-14



Exemplary illustration

Light alloy manifold bases for 2 to 10 valve positions.
Not for 5/2-way spool valves - Robust type and 3A, 4A, 3V, 4V type.

Technical data

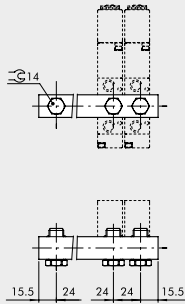
| | |
|-------------|-------------------------------------|
| Description | Manifold base for 8 valve positions |
| Version | with 24 screws and gaskets |

Commercial data

| | |
|-------------------------|----------------------------|
| Customs tariff number | 84818099 |
| Country of origin | IT |
| eCl@ss 5.1.4 | 27299205 |
| eCl@ss 9.0 | 27299205 |
| UNSPSC_Code_v190501 | 40141616 |
| UNSPSC_CodeDesc_v190501 | Valve parts or accessories |

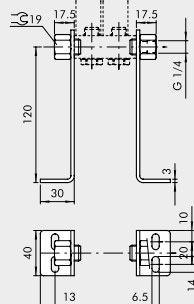
ACCESSORIES: 1/8 MANIFOLDS FOR SERIES 70 PNV-SOV AND SERIES BASIC VALVES

MANIFOLD WITH 2 TO 7 POSITIONS + FITTINGS



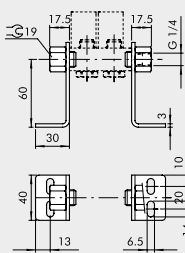
| Code | Description | Weight [g] |
|------------|-------------|------------|
| 0221000200 | CSA-18-02 | 70 |
| 0221000300 | CSA-18-03 | 99 |
| 0221000400 | CSA-18-04 | 131 |
| 0221000500 | CSA-18-05 | 162 |
| 0221000600 | CSA-18-06 | 192 |
| 0221000700 | CSA-18-07 | 229 |

BRACKET SET H120



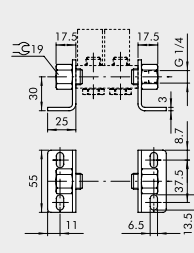
| Code | Description | Weight [g] |
|------------|-------------|------------|
| 0221000190 | CSA-18-OO | 309 |

BRACKET SET H60



| Code | Description | Weight [g] |
|------------|-------------|------------|
| 0221000191 | CSA-18-OC | 213 |

BRACKET SET H30



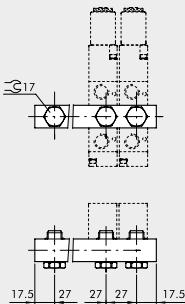
| Code | Description | Weight [g] |
|------------|-------------|------------|
| 0221000192 | CSA-18-OE | 181 |

VALVES

ACCESSORIES FOR VALVES SERIES 70

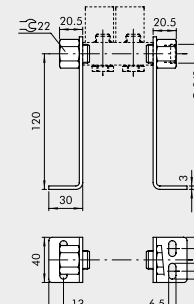
ACCESSORIES: 1/4 MANIFOLDS FOR SERIES 70 PNV-SOV AND SERIES BASIC VALVES

MANIFOLD WITH 2 TO 7 POSITIONS + FITTINGS



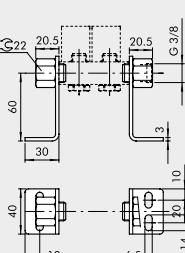
| Code | Description | Weight [g] |
|------------|-------------|------------|
| 0222000200 | CSA-14-02 | 89 |
| 0222000300 | CSA-14-03 | 131 |
| 0222000400 | CSA-14-04 | 174 |
| 0222000500 | CSA-14-05 | 213 |
| 0222000600 | CSA-14-06 | 252 |
| 0222000700 | CSA-14-07 | 328 |

BRACKET SET H120



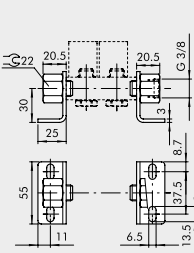
| Code | Description | Weight [g] |
|------------|-------------|------------|
| 0222000190 | CSA-14-OO | 338 |

BRACKET SET H60



| Code | Description | Weight [g] |
|------------|-------------|------------|
| 0222000191 | CSA-14-OC | 242 |

BRACKET SET H30



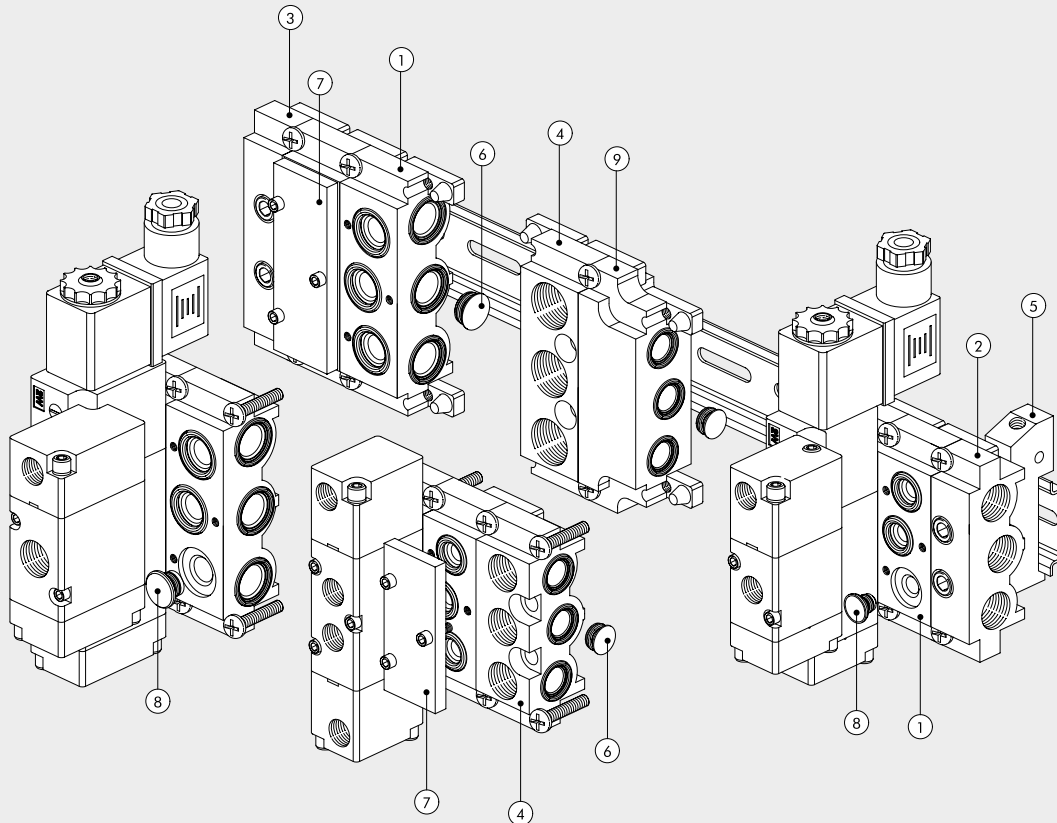
| Code | Description | Weight [g] |
|------------|-------------|------------|
| 0222000192 | CSA-14-OE | 209 |

ACCESSORIES: MANIFOLD BASES FOR SERIES 70 PNV-SOV AND SERIES BASIC VALVES

MODULAR BASES FOR SERIES 70 SOV-PNV VALVES

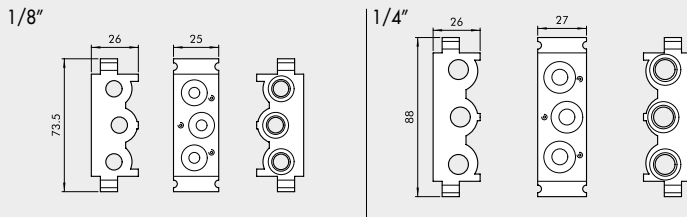
VALVES

ACCESSORIES FOR VALVES SERIES 70



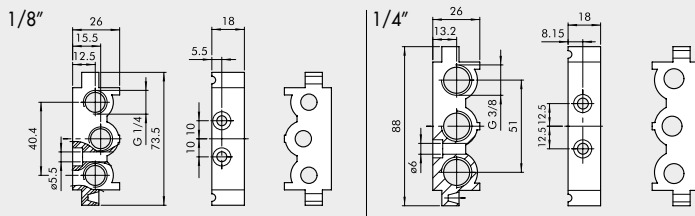
| Reference | 1/8" | 1/4" | Description |
|-----------|------------|------------|----------------------------------|
| ① | 0226004150 | 0226005150 | Modular manifold base |
| ② | 0226004201 | 0226005201 | End plate without OR |
| ③ | 0226004200 | 0226005200 | End plate with OR |
| ④ | 0226004300 | 0226005300 | Intermediate part for upper feed |
| ⑤ | 0226004600 | 0226005600 | Adapter for omega bar |
| ⑥ | 0226004000 | 0226005000 | Intermediate diaphragm |
| ⑦ | 0226004500 | 0226005500 | Blanking plate |
| ⑧ | 0226004001 | 0226005001 | 3/2 cap |
| ⑨ | 0226006600 | - | Dimensional adapter |

① MODULAR BASE MANIFOLD



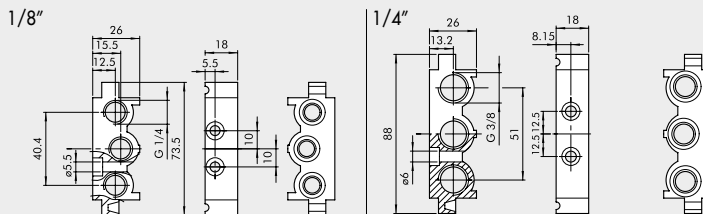
| Code | Description | Weight [g] |
|------------|----------------------------|------------|
| 0226004150 | Modular base MANIFOLD 1/8" | 110 |
| 0226005150 | Modular base MANIFOLD 1/4" | 131 |

② END PLATE WITHOUT OR



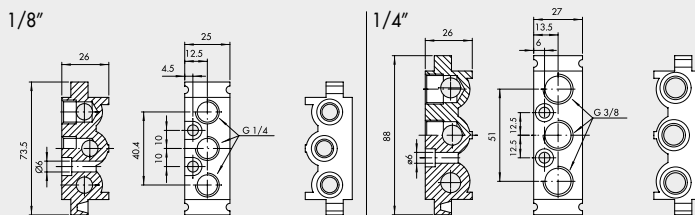
| Code | Description | Weight [g] |
|------------|---------------------------|------------|
| 0226004201 | End plate without OR 1/8" | 52 |
| 0226005201 | End plate without OR 1/4" | 57 |

③ END PLATE WITH OR



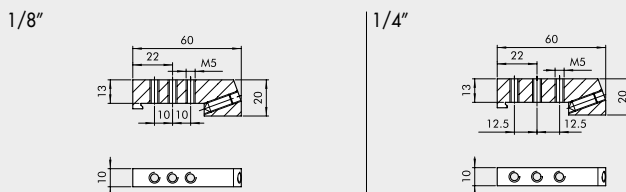
| Code | Description | Weight [g] |
|------------|------------------------|------------|
| 0226004200 | End plate with OR 1/8" | 74 |
| 0226005200 | End plate with OR 1/4" | 80 |

④ INTERMEDIATE PART FOR UPPER FEED



| Code | Description | Weight [g] |
|------------|---------------------------------------|------------|
| 0226004300 | Intermediate part for upper feed 1/8" | 93 |
| 0226005300 | Intermediate part for upper feed 1/4" | 109 |

⑤ ADAPTER FOR OMEGA BAR BASES (DIN EN 50022)



| Code | Description | Weight [g] |
|------------|--------------|------------|
| 0226004600 | Adapter 1/8" | 46 |
| 0226005600 | Adapter 1/4" | 46 |

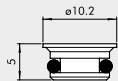
N.B.: Also for multiple bases

VALVES

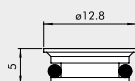
ACCESSORIES FOR VALVES SERIES 70

⑥ INTERMEDIATE DIAPHRAM

1/8"



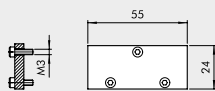
1/4"



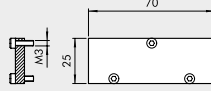
| Code | Description | Weight [g] |
|------------|-----------------------------|------------|
| 0226004000 | Intermediate diaphragm 1/8" | 2 |
| 0226005000 | Intermediate diaphragm 1/4" | 3 |

⑦ BLANKING PLATE FOR UNUSED POSITIONS

1/8"



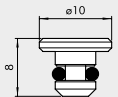
1/4"



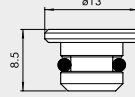
| Code | Description | Weight [g] |
|------------|---------------------|------------|
| 0226004500 | Blanking plate 1/8" | 23 |
| 0226005500 | Blanking plate 1/4" | 29 |

⑧ PLUG FOR 3/2

1/8"

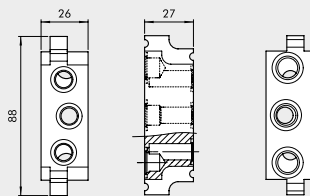


1/4"



| Code | Description | Weight [g] |
|------------|-------------------------|------------|
| 0226004001 | Blanking plate 3/2 1/8" | 2 |
| 0226005001 | Blanking plate 3/2 1/4" | 4 |

⑨ DIMENSIONAL ADAPTER 1/8" - 1/4"

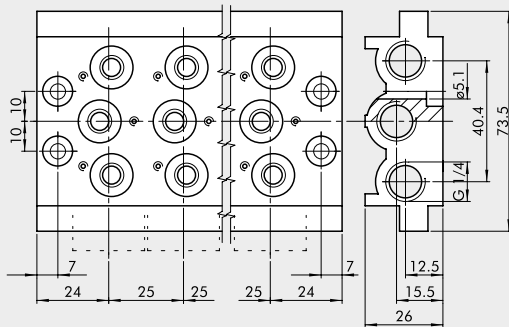


| Code | Description | Weight [g] |
|------------|--------------------|------------|
| 0226006600 | Adapter 1/8", 1/4" | 177 |

NOTES

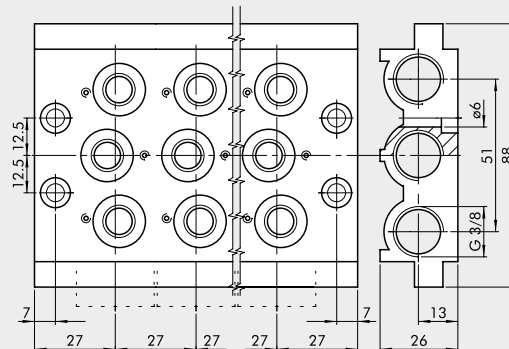
ACCESSORIES: MULTIPLE BASES FOR SERIES 70 PNV-SOV VALVES

MULTIPLE BASE 1/8"



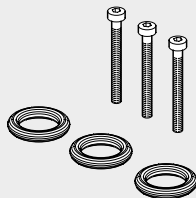
| Code | Description | Abbrev. | Weight [g] |
|------------|------------------|-----------|------------|
| 0223000201 | 2-position base | CVM-18-02 | 236 |
| 0223000301 | 3-position base | CVM-18-03 | 321 |
| 0223000401 | 4-position base | CVM-18-04 | 407 |
| 0223000501 | 5-position base | CVM-18-05 | 494 |
| 0223000601 | 6-position base | CVM-18-06 | 587 |
| 0223000701 | 7-position base | CVM-18-07 | 711 |
| 0223000801 | 8-position base | CVM-18-08 | 760 |
| 0223000901 | 9-position base | CVM-18-09 | 842 |
| 0223001001 | 10-position base | CVM-18-10 | 923 |

MULTIPLE BASE 1/4"



| Code | Description | Abbrev. | Weight [g] |
|------------|------------------|-----------|------------|
| 0224000201 | 2-position base | CVM-14-02 | 296 |
| 0224000301 | 3-position base | CVM-14-03 | 406 |
| 0224000401 | 4-position base | CVM-14-04 | 515 |
| 0224000501 | 5-position base | CVM-14-05 | 624 |
| 0224000601 | 6-position base | CVM-14-06 | 733 |
| 0224000701 | 7-position base | CVM-14-07 | 845 |
| 0224000801 | 8-position base | CVM-14-08 | 956 |
| 0224000901 | 9-position base | CVM-14-09 | 1055 |
| 0224001001 | 10-position base | CVM-14-10 | 1086 |

GASKET KIT



| Code | Description | Weight [g] |
|------------|--------------------------|------------|
| 0226004701 | Gasket kit for 1/8" base | 5 |
| 0226005701 | Gasket kit for 1/4" base | 5 |

VALVES

ACCESSORIES FOR VALVES SERIES 70

Accessories

| | Art. No. | Type No. |
|---|-----------------|-----------------|
| Blanking plate G 3/8 manifold base for G 1/4 conn. surface | 106641 | 520.14-A |
| Plugs for multiple manifold base, G 1/4 | 119136 | 520.14-V |
| Intermediate plugs for multiple manifold base, G 1/4 | 129153 | 520.14-Z |
| Omega adapter f. manifold base system/multi-base pl., G 1/4 | 146743 | 0226005600 |

Spareparts

| | Art. No. | Type No. |
|--|-----------------|-----------------|
| Set of gasket (parts subject to wear), G 1/4 | 129903 | 520.14-DS |